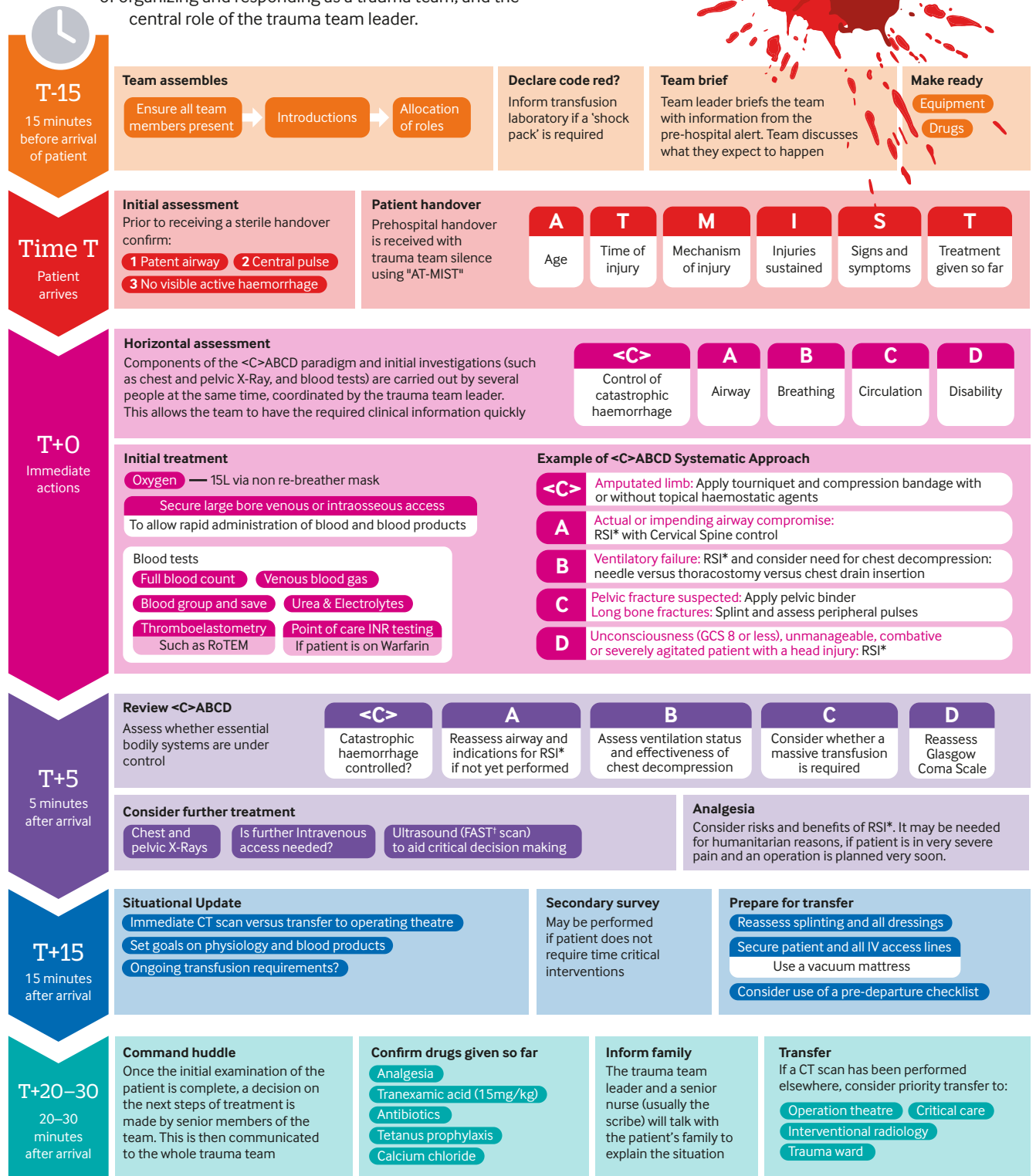




This suggested trauma team timeline is based on a combination of guidance from expert opinion and experience of UK emergency departments. It aims to help clinicians familiarise themselves with the basic principles of organizing and responding as a trauma team, and the central role of the trauma team leader.



* RSI = Rapid sequence induction of anaesthesia

† FAST = Focused Assessment with Sonography for Trauma